



MAJESTIC BUILDERS

5/12, Rajiv Gandhi Nagar, Koothapakkam, Cuddalore-2.
Email: cuddaloremajesticbuilders@gmail.com

CERTIFICATE

(Availability of barrier free built environment and toilets created for the physically challenged)

This is to certify that **barrier free built environment** with following facilities is available for the physically challenged. In the ground floors of A & G Blocks, in the **C.K. College of Engineering & Technology (CKCET)**.

- a) Barrier Free Environment like Lift, Ramp, etc.,
- b) User friendly toilets for Physically challenged persons, Drinking water, Refuge and Signage
- c) Design provisions for disable people, including Non-Ambulant people (Using small wheel chairs)
- d) All Weather Approach Roads,
- e) Sewage Treatment Plant

Thank you

A handwritten signature in black ink, appearing to read 'P. Dineshkumar', with a long horizontal stroke extending to the right.

Er.P. DINESHKUMAR, B.E., M.E.,
GRDE I - RE
Reg. No: 093 / LS /2023 / 00005

List of Barrier Free facility for Divyangjan

S. No	Details	Page. No
1	Geo-Tagged photos for Ramp	01
2	Geo-Tagged photos for Lift & Connecting Bridges	06
3	Geo-Tagged photos for washrooms for disability person	08
4	Geo-Tagged photos for display boards and Signpost & Pathways	09
5	Geo-Tagged photos for mechanized Equipment	12
6	Geo-Tagged photos for screen reader	15
7	Geo-Tagged Photos for Scribe	16

1. RAMP FACILITY AT CKCET

C.K. College of Engineering & Technology ensures a barrier-free environment that enables individuals with disabilities to navigate the campus safely and independently. The facilities are designed to support their unrestricted movement and allow them to participate in daily activities without assistance. Our infrastructure, including buildings, spaces, and transportation systems, is thoughtfully created to promote inclusivity and accessibility across the campus.

GEO TAGGED PHOTOS FOR RAMP





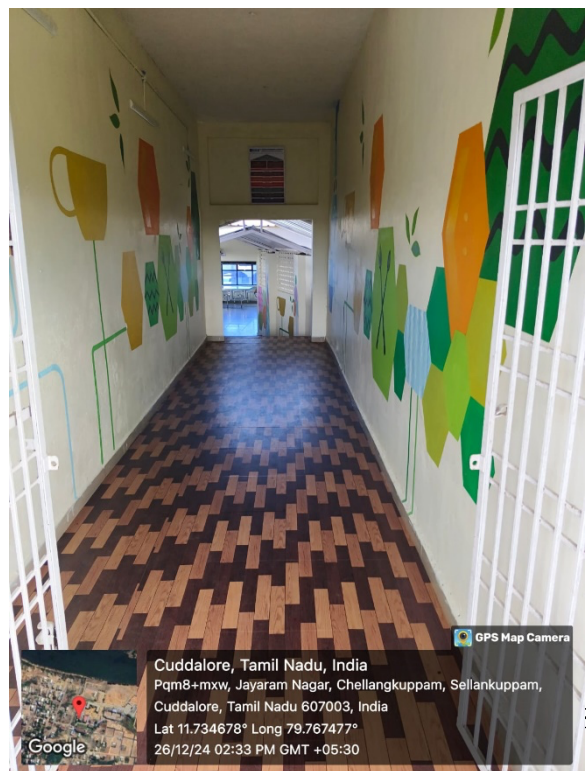
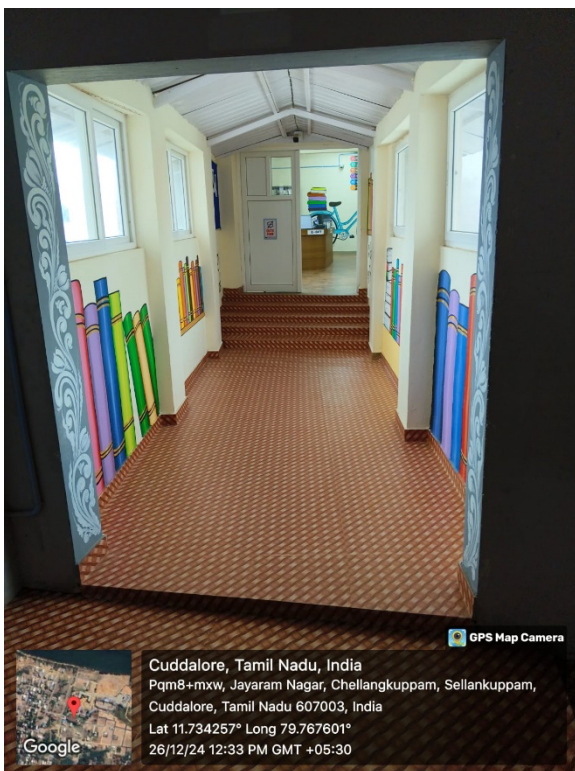
2. LIFT FACILITY AND CONNECTING BRIDGES AT CKCET

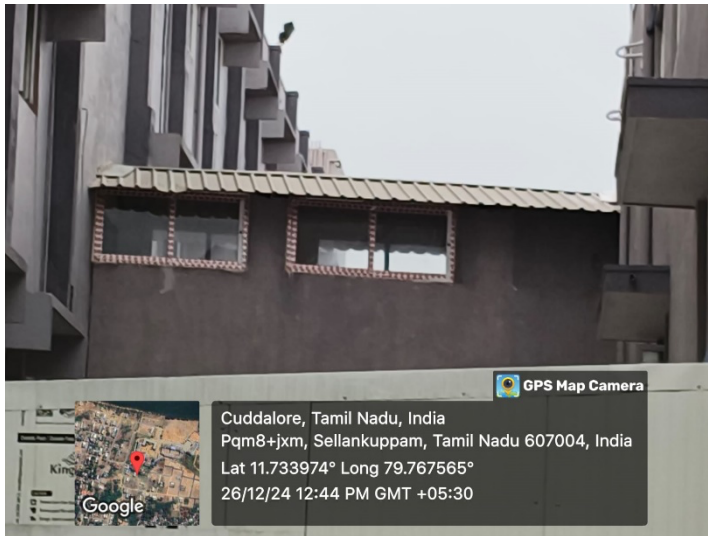
C.K. College of Engineering & Technology is committed to fostering an inclusive environment and is equipped with a lift to ensure seamless, barrier-free access for everyone on campus. This facility caters to the needs of students, staff, visitors, and individuals with disabilities, enabling effortless movement between floors. The lift is further enhanced with audiovisual signals to indicate the arrival of different floors, making it user-friendly and accessible to individuals with visual or hearing impairments. By prioritizing such accessibility features, the institution reflects its dedication to inclusivity, convenience, and a supportive campus experience for all

GEO TAGGED PHOTOS FOR LIFT & CONNECTING BRIDGES



GEO TAGGED PHOTOS FOR CONNECTING BRIDGES





C.K. College of Engineering & Technology ensures a barrier-free environment with the provision of connecting bridges, facilitating seamless access for students, staff, visitors, and individuals with disabilities. The campus features well-designed bridges connecting A - Block to the Library and A - Block to Canteen and D - Block, enabling convenient and uninterrupted movement between these buildings. These connecting bridges reflect the institution's commitment to creating an inclusive and accessible infrastructure, promoting ease of navigation and enhancing the overall campus experience for everyone.

3. DISABLE FRIENDLY WASHROOM

C.K. College of Engineering & Technology provides specially designed restrooms for differently abled individuals. These accessible restrooms are equipped with fixtures and fittings that ensure comfort and convenience for individuals with disabilities. Features such as non-slip flooring, sliding doors, and grab bars facilitate easy access and safe usage. Additionally, sinks and basins have been thoughtfully modified to meet their specific needs. Clear signboards are placed outside the washrooms to ensure easy identification and to prevent misuse by others.

GEO TAGGED PHOTOS FOR WASHROOMS FOR DISABILITY PERSON



GEO TAGGED PHOTOS FOR DISPLAY BOARDS, SIGNPOSTS & PATHWAYS

Display Boards: Essential components for assisting individuals with disabilities, ensuring they can navigate the campus effectively.

Sign Boards: Strategically placed throughout the campus to help differently-abled students move comfortably to any location without confusion.

Campus-Wide Installation: Sign boards and display boards are installed at various locations to benefit differently-abled individuals, enhancing their independence and ease of movement.

Accessible Pathways: Well-designed pathways facilitate smooth and hassle-free movement across the campus for individuals with disabilities.



ENTIRE COLLEGE ROUTE MAP



SIGNBOARD NEAR A- BLOCK



SIGNBOARD NEAR B - BLOCK



SIGNBOARD NEAR D - BLOCK



SIGNBOARD NEAR G - BLOCK

4. PEDESTRIAN-FRIENDLY PATHWAYS

- **Inclusive Design:** Pedestrian-friendly pathways are thoughtfully constructed in multiple areas of the campus, considering the needs of differently-abled individuals.
- **Ease of Movement:** These pathways allow disabled students to move comfortably, whether on foot or using a wheelchair.
- **Enhanced Accessibility:** The pathways provide a sense of freedom, enabling disabled students to navigate the campus independently while avoiding heavy human traffic.



5. WHEELCHAIR FOR DISABLED PERSON

Wheelchair Accessibility at C.K. College of Engineering & Technology

- Essential Mobility Support: Wheelchairs are a crucial mobility aid for individuals with disabilities, and the institution prioritizes their availability.
- Adequate Design: The wheelchairs provided are spacious and comfortable, ensuring ease of use for differently-abled individuals.
- Sufficient Availability: A sufficient number of wheelchairs are readily accessible to meet the needs of disabled persons on campus.
- Dedicated Assistance: Trained staff members are available to assist with the movement of disabled individuals as per their requirements, ensuring a hassle-free experience.

GEO TAGGED PHOTOS FOR MECHANIZED EQUIPMENT - WHEELCHAIR FACILITY



6. BATTERY VEHICLE FOR INTERNAL MOVEMENT

E-Vehicle Accessibility at C.K. College of Engineering & Technology

- **Efficient Transportation:** The e-vehicle is actively used to transport faculty, staff, students, and visitors across various areas of the campus.
- **Inclusive Utilization:** The e-vehicle is optimally utilized by physically challenged individuals, including students and visitors, for a range of purposes.
- **Eco-Friendly and Convenient:** The six-seater e-vehicle ensures a zero carbon footprint while providing timely and accessible transportation for differently-abled individuals within the campus.



7. AMBULANCE FACILITIES

Health and Medical Services at C.K. College of Engineering & Technology

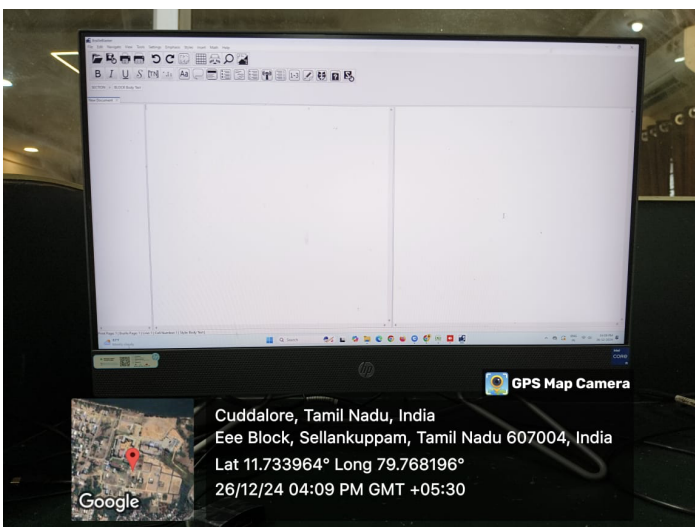
- On-Campus Health Centre: The college has a health centre staffed with a qualified doctor and nursing staff to provide medical care, particularly for female students.
- 24/7 Ambulance Facility: An ambulance service is available round the clock to handle any medical emergencies on campus, ensuring the safety and well-being of all students and staff.



8. ASSISTIVE TECHNOLOGY AND FACILITIES FOR PERSON WITH DISABILITIES

Assistive Technology and Facilities for Persons with Disabilities at C.K. College of Engineering & Technology

- **Braille Blaster:** Our institute offers Braille Blaster, an open-source software designed to assist individuals with visual impairments. This software leverages NIMAS (National Instructional Materials Accessibility Standard) files to automate basic formatting, making the process of creating Braille textbooks quicker and more efficient. It ensures that visually-impaired students have their Braille textbooks available from the first day of class.
- **JAWS Screen Reader:** In our college library, we have the JAWS (Job Access with Speech) software, the world's most popular screen reader, developed to support visually-challenged individuals. JAWS provides both speech and Braille output, enabling students to navigate the internet, write documents, read emails, and create presentations. This tool ensures that students access various computer applications smoothly, whether on campus or remotely.



Braille Blaster Software



Jaw Screen Reader Software

9. Scribe Facility at C.K. College of Engineering & Technology

At C.K. College of Engineering & Technology, we provide the facility of a scribe for students with disabilities or those who are unable to write their exams due to injuries. A scribe is designated to assist these students by writing the examination on their behalf, ensuring equal opportunities for all candidates. This facility is available through the college examination cell. However, to date, no student has utilized this service, as there have been no admissions of students requiring such assistance.

GEO TAGGED PHOTOS FOR SCRIBE

